

# SASA 25 Report

The data in this SASA 25 report refers to the activities carried out by 53 **economic-productive initiatives** of the Comparte network in the year 2024.

	2024	2023	%
Initiatives	53	34	+56%
Families	1.613	1.278	+26%
Facturation	2.831.776 us\$	2.638.041 us\$	+7%



Published date: **february 2026**  
Complete report in: <https://shre.ink/InformeCompletoRADAR25>



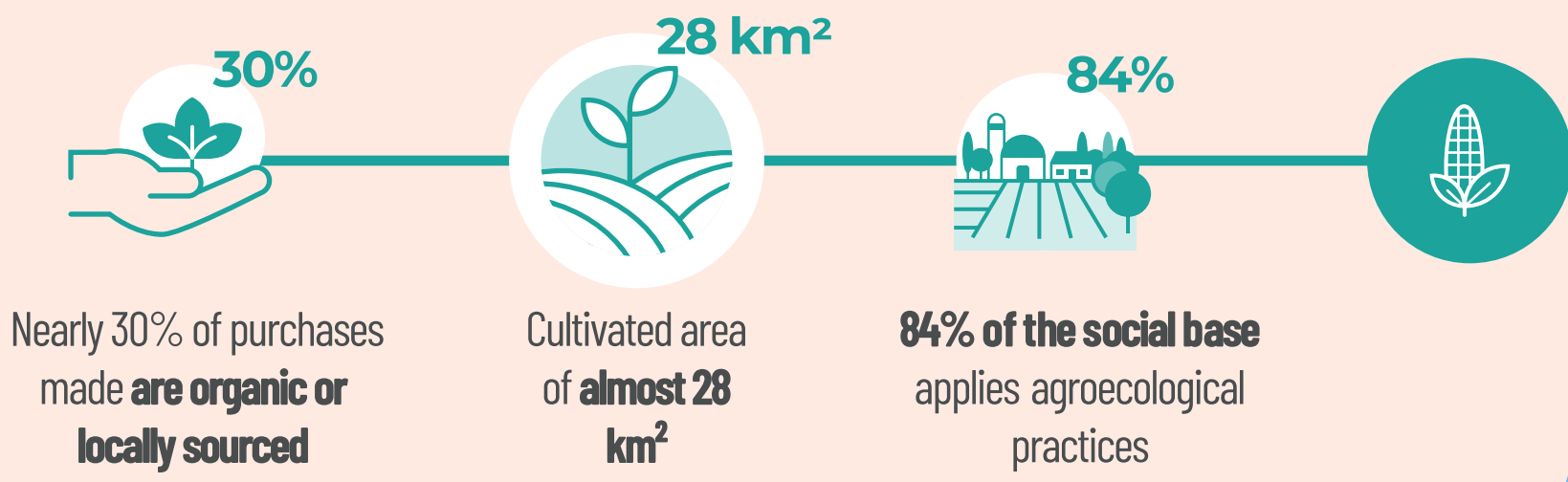
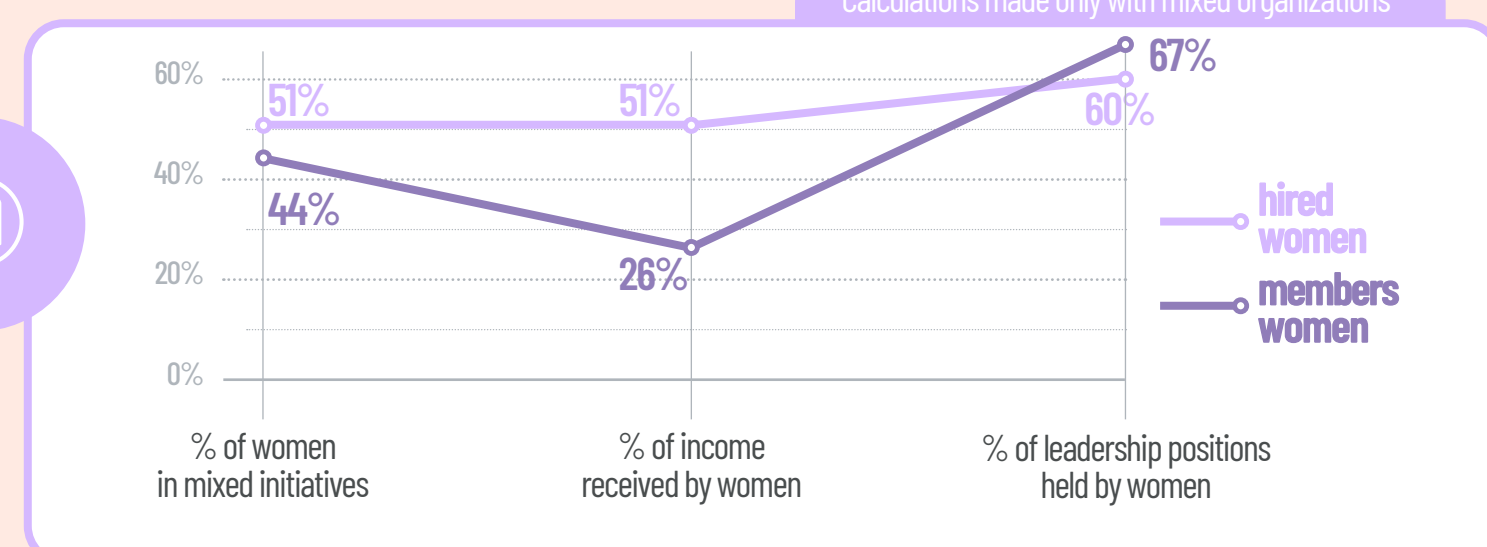
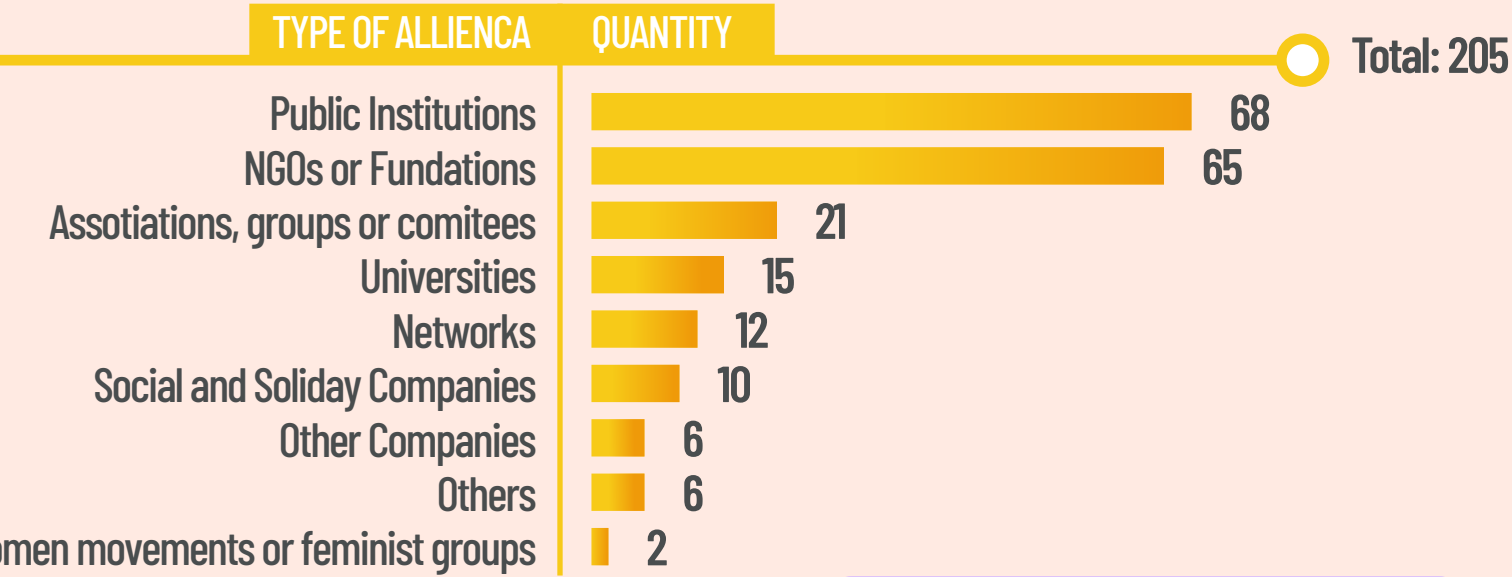
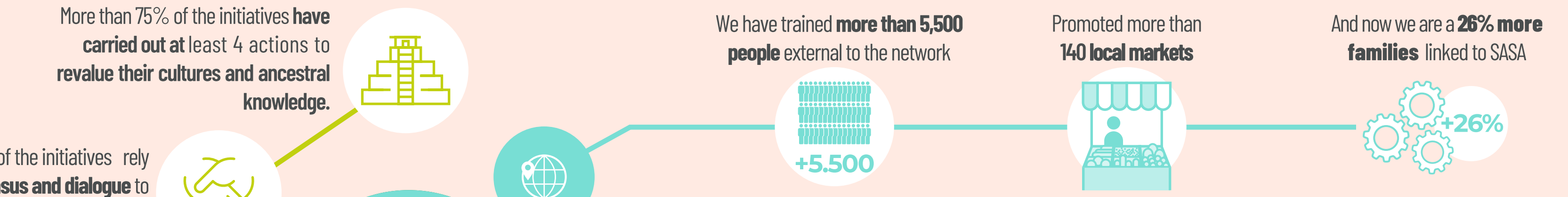
More than 75% of the initiatives **have carried out at least 4 actions to revalue their cultures and ancestral knowledge.**

2 out of 3 of the initiatives rely on **consensus and dialogue** to make their decisions

We have trained **more than 5,500 people** external to the network

Promoted more than **140 local markets**

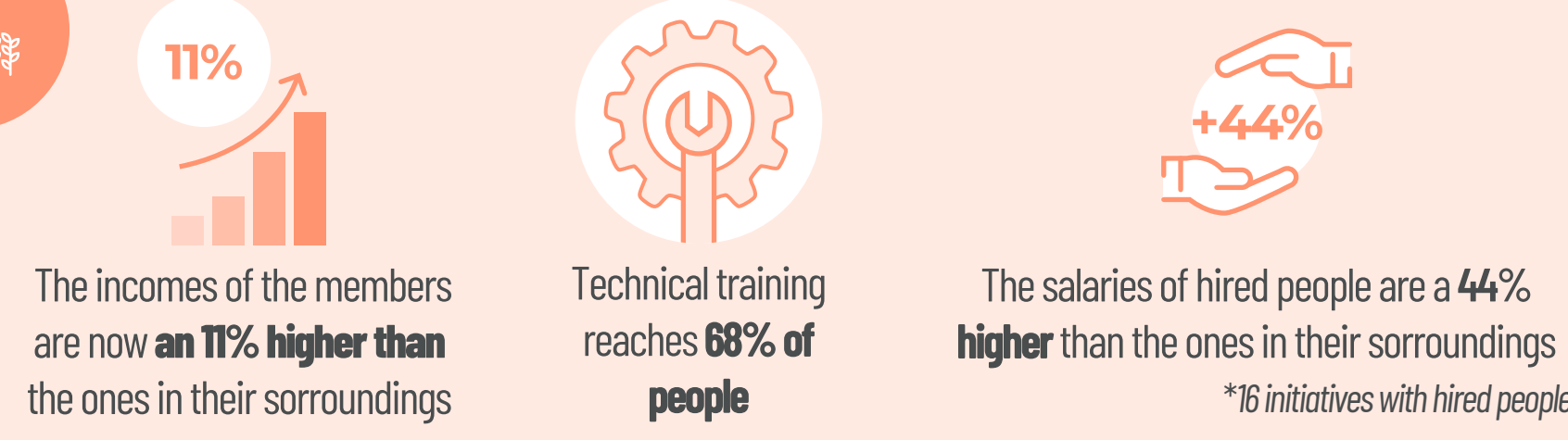
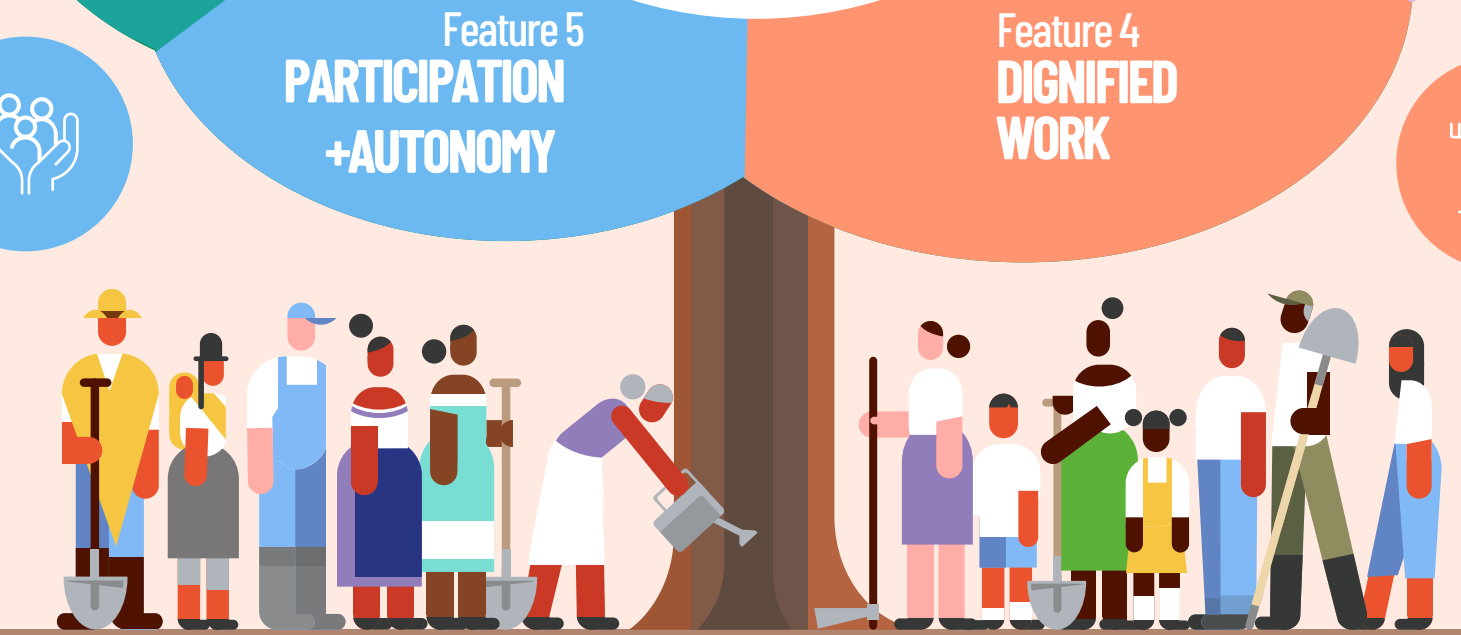
And now we are a **26% more families** linked to SASA



Asiste el **82%** de las mujeres, el **80%** de los hombres y el **83%** de los jóvenes

**52 out of 53 initiatives** have assembly spaces

**Close to half of the people** have received some training in leadership and management.



## The organizations

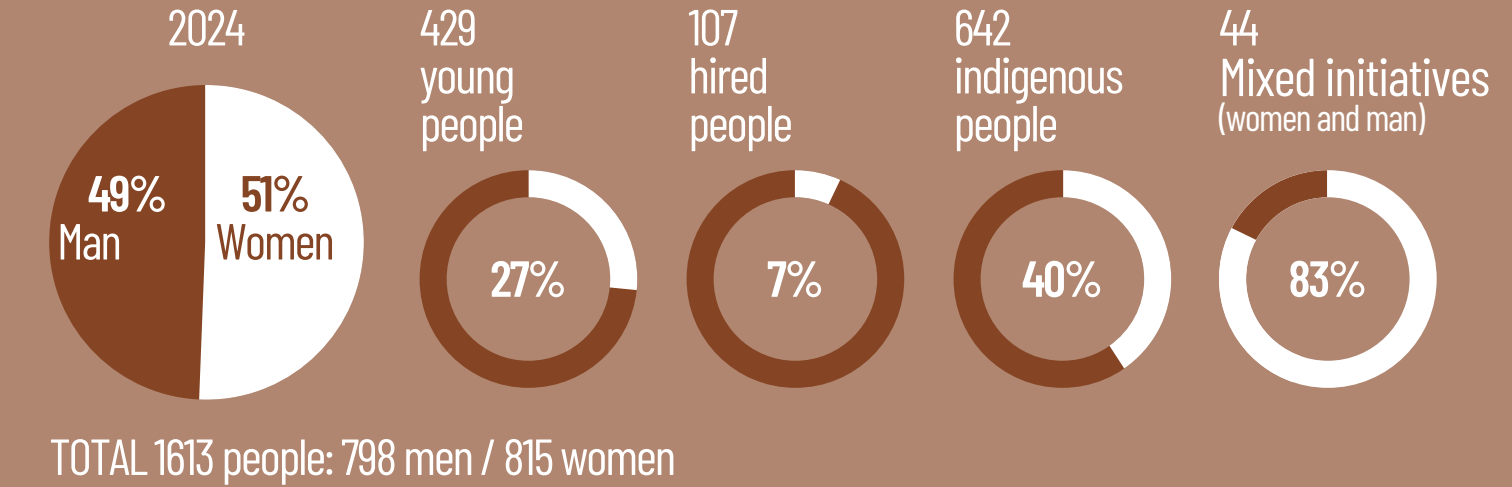
The participating organizations are from Colombia, Guatemala, Bolivia, Ecuador, El Salvador, Mexico and Peru and work in 22 different value chains of products such as coffee, honey, vegetables, diversified stores, gastronomy or cocoa and chocolate among others.



## The value chains

Activity	Nº	PRODUCTION VOLUMEN
Agriculture	15	271.622,10 Kg
Manufacturing	17	43.817,00 units
Livestock	8	485.907,40 Kg
Services	13	74.552,00 units

## Characteristics of the people in the initiatives



## Families per organization

More than 50	13%
Between 20 and 50	30%
Less than 20 families	57%