

SASA 24 Report

The data in this SASA 24 report refers to the activities carried out by 34 economic-productive initiatives of the Comparte network in the year 2023.

	2023	2022	%
Initiatives	34	27	+25%
Families	1.278	1.073	+21%
Facturation	2.638.041 us\$	1.930.088 us\$	+37%

Complete report in: https://n9.cl/informe_radar24_comparte
Published date: febrero 2025



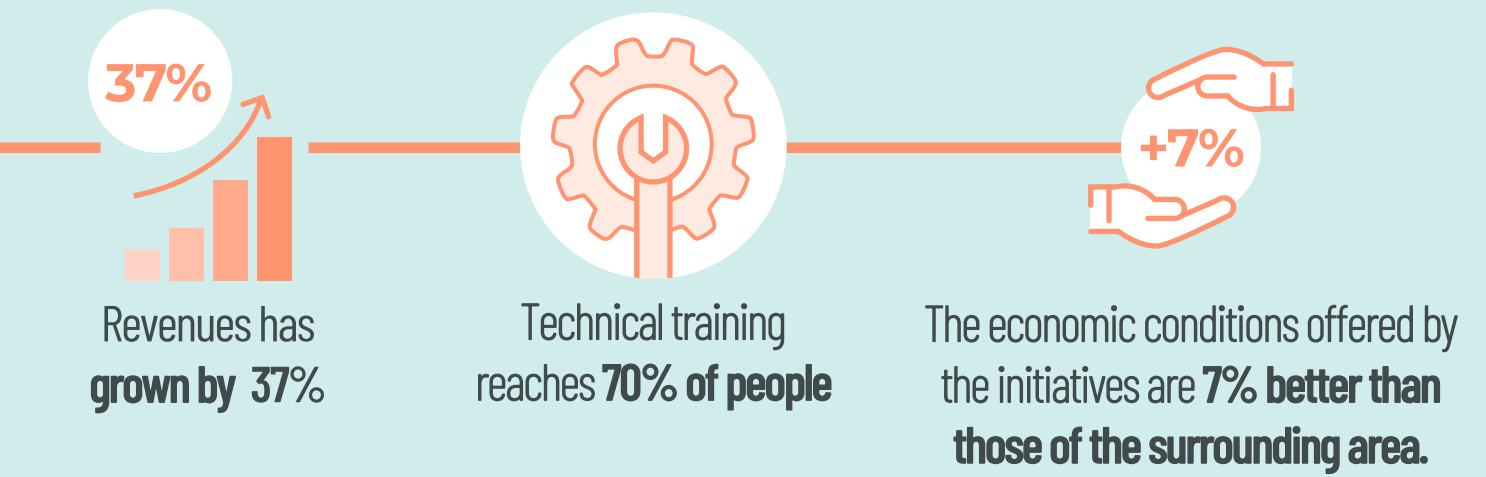
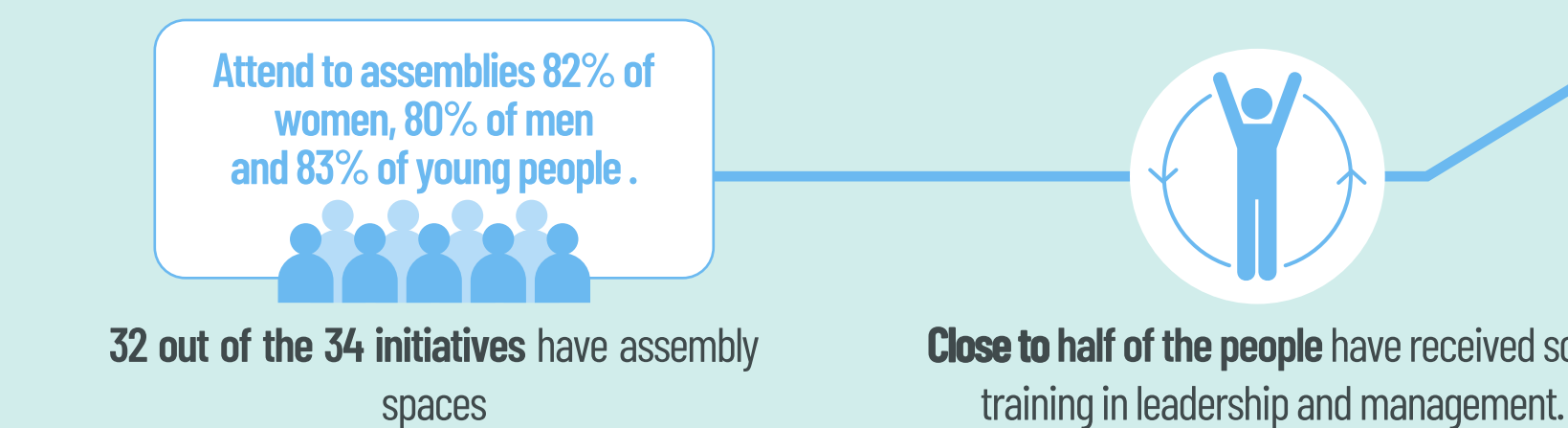
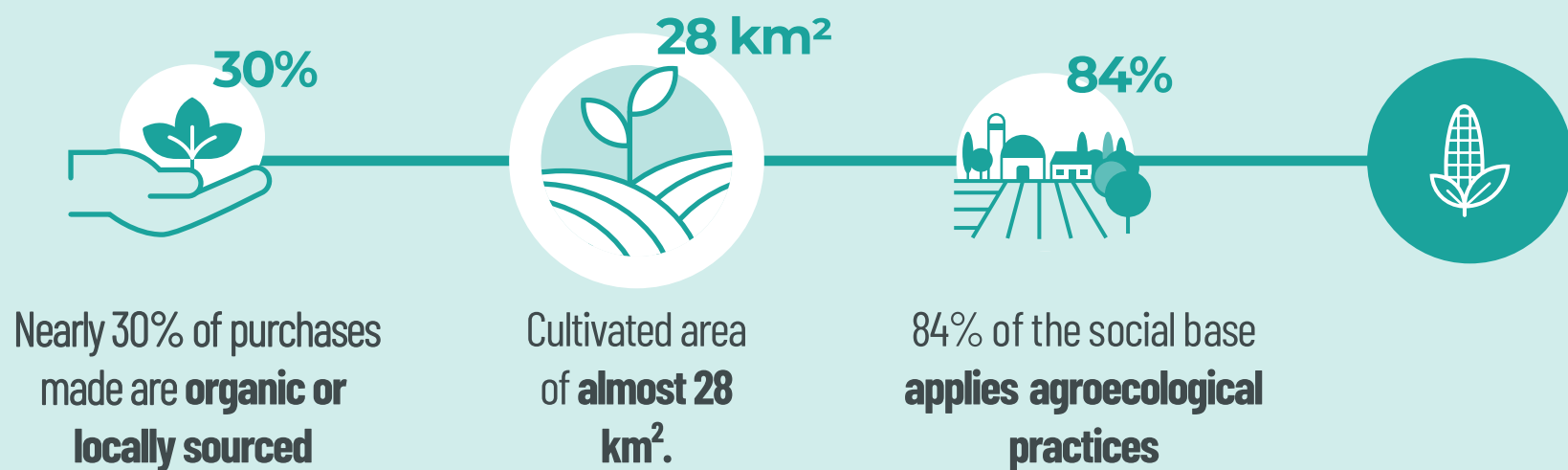
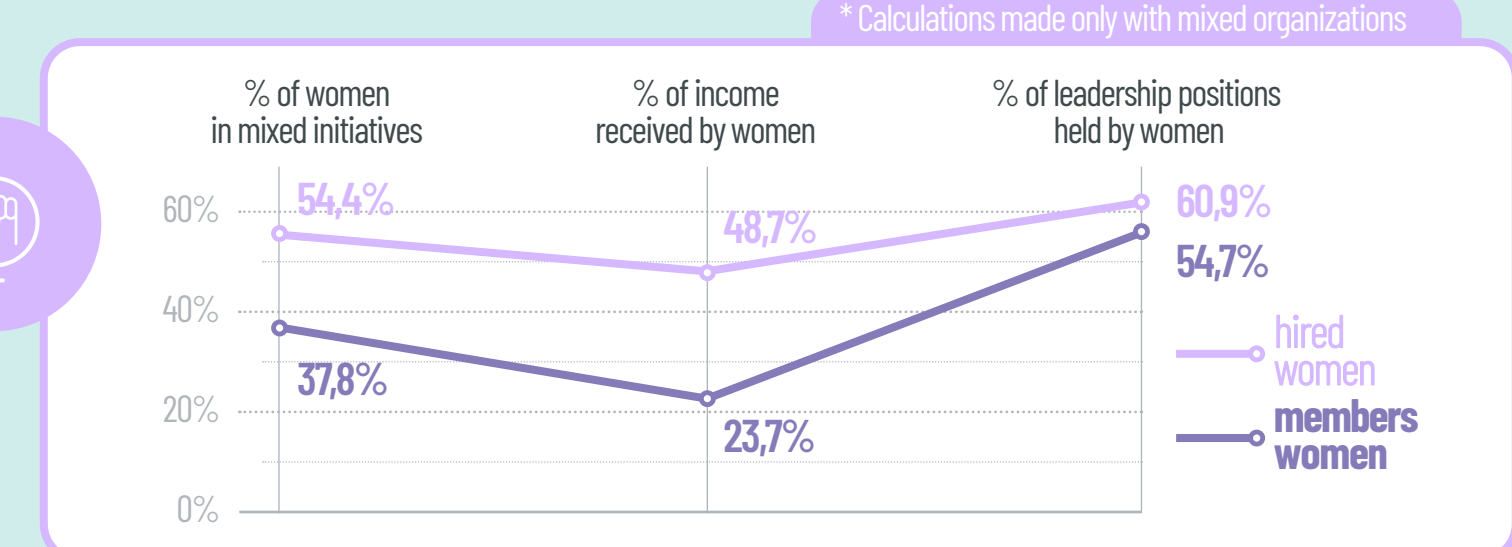
4 out of 5 initiatives have carried out at least 4 actions to **revalue their cultures and ancestral knowledge**.

74% of the initiatives rely on **consensus and dialogue** to make their decisions

We have trained **more than 3,500 people external** to the network

Promoted more than **100 local markets**

And now we are a **21% more people** linked to the initiatives



The organizations

The participating organizations are from Bolivia, Colombia, Ecuador, El Salvador, Guatemala, Mexico, Paraguay and Peru and work in 19 different value chains, with a focus on products such as honey, vegetables, coffee, cocoa, dairy products, textiles, fruit, handicrafts and stores, among others.



The value chains

ACTIVITY	Nº	PRODUCTION VOLUME
Livestock	9	(493.748 Kg)
Agriculture	9	(209.858 Kg)
Services	8	(60.065 units)
Manufacturing	8	(32.512 units)

Characteristics of the people in the initiatives



Families per organization

More than 50	18%
Between 20 y 50	38%
Less than 20 families	44%